



Heatwave series

Model name

Specification

| | |
|-----------------------|-----------------------------|
| Dimensions | 2300x2400x920mm |
| Water Volume | 1550 Litres |
| Dry Weight | 463kg |
| Power Required | 32 Amps |
| Loungers | 2 |
| Seats | 4 |
| Insulation | R18 Full Foam |
| Side Skirt Insulation | Aluminium Wrap 15mm Foam |
| Shell | 6-Layer Lucite Acrylic |
| Thermal Cover | Included |

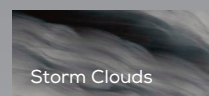
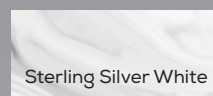
Performance

| | |
|------------------|-----------------------|
| Control System | Gecko in.K1001 |
| Heater Pack | Gecko in.YE3 3kW |
| Jet Pumps | 2x 3hp |
| Hot Air Pump | 1x 400w |
| Circulation Pump | 1x 0.35hp |
| Hydro Jets | 59 |
| Air Jets | 20 |
| Filtration | Twin PureBlue Filters |
| Ozonator | Yes |

Entertainment

| | |
|-----------------|---|
| Bluetooth Audio | Gecko in.Stream 2 |
| Speakers | 2x Transducer 1x Subwoofer |
| WiFi | Optional |
| Lighting | Waterline LEDs Big Underwater LED LED Corner Panels |
| Water Features | 3x Roman Fountains 1x 6" waterfall Illuminated Ice Bucket |

Available colours



Hot Air Massage System

The Oasis Spas Heatwave range features our new 400w preheated hot air jet system with an added array of soothing air massage jets.

Award-winning R18 insulation

Oasis Spas are the only tubs to feature the award-winning R18plus full-foam insulation system, which locks heat into the tub and prevents it escaping to the atmosphere.

Gecko in.stream bluetooth audio with premium transducer speakers & subwoofer

Unlike traditional speakers that produce sound waves that travel through the air to reach our ears, our transducer speakers are designed to transmit sound waves directly through the water. This means that you won't just hear your music, but you'll actually feel it too!



LED Corner Panels



Full Foam Insulation



Optional WiFi



Ozone Mixing Chamber

